

## NESLC NEWSLETTER no 2 of 2018

Welcome to the latest issue of the NESLC Newsletter. In this issue we have a variety of items including some excellent cashback offers and theatre tickets.

I hope you enjoy the Newsletter and I would be interested to hear your thoughts on it which should be sent by e-mail to

[George.Green9@blueyonder.co.uk](mailto:George.Green9@blueyonder.co.uk).

George Green

Editor

**If you wish to join NESLC please ring Steve Harris, NESLC Gym Manager on 07790 085104. If you are unsure about whether you are a member:-**

You are an NESLC member if:

Benton Park View (BPV) - you are in HASSRA or RCSL unless you are a HASSRA member in the local office club CMG (Room BP5302 only).

Tyneview Park (TVP) - you are in HASSRA unless you are a member in the local office clubs (Newcastle Pension Centre, NCIB/FES), or an RCSL North member who has opted to retain your NESLC membership.

Durham House (DH) - you are in HASSRA or an RCSL North member who has opted to retain your NESLC membership.

Waterview Park (WVP) - you are an RCSL North Member who has opted to retain your NESLC membership.

If you are a HASSRA member in a local office club at any of the above locations you can choose to join NESLC for an additional £8 per year.

If you are an RCSL North member at TVP, WVP or DH and have not opted to retain your NESLC membership you can join NESLC for an additional £8 per year.

If you are unsure that you have retained your NESLC membership please contact:- Alan Borrowdale ([alan.borrowdale@dwp.gsi.gov.uk](mailto:alan.borrowdale@dwp.gsi.gov.uk)) for confirmation for DWP

members and Lynsey Wilkinson (linsey.scurr@hmrc.gsi.gov.uk) for confirmation for RCSL members.

### **How do I access the NESLC Website?**

**RCSL Members** Those who work in HMRC can access the NESLC website via the Internal Intranet site. Valuation Office staff should follow the instructions below for HASSRA members.

**HASSRA Members** (those who work in DWP) via the HASSRA North East Region NESLC Website which can be accessed as follows: Open HASSRA main page on the internet; Go to the regional North East Page; Scroll down and in the right hand column click on the **clubs** link to open page for NESLC.

**The following electronic link can be used to access the NESLC page on the HASSRA website.**

<https://intranet.dwp.gov.uk/page/north-east-clubs>

This is no longer an external link and will only work for staff with access to DWP or HMRC systems.

## **Newcastle Estate Sport & Leisure Club**

### **NESLC Membership Cards**

From 2017 in order to take part in NESLC offers and trips you will be required to have a membership card. The cards are free to members of HASSRA and RCSL at Benton Park View, Tyne View Park and Durham House with some exceptions. See page 1 for advice on NESLC membership.

In order to receive your membership card please send an email to:

Alan.borrowdale@dwp.gsi.gov.uk

With your name, email address and location. You will then be notified of where and when to pick up your card.

££££

### **NESLC Bottoms Up Subsidy has Changed**

££££

From 1 May 2018 any Bottoms Up trip that is arranged between 1 May 2018 and 30 November 2018 will receive **50%** subsidy up to a maximum of £15.00

A separate budget will be agreed for the December Bottoms Up

HMRC staff can use the following link to access the full instructions:

<http://internal.active.hmrci/page/neslc-bottoms-application-process>

DWP staff can use the following link to access the full instructions:

<https://intranet.dwp.gov.uk/page/neslc-bottoms>

Get your applications in early to save disappointment!

## **NESLC 2018 CASHBACK Offer**

### **KYNREN 30 June – 15 September 2018**

Ticket Cost £20 to £35 subsidy **£10.00**

Ticket Cost £36 - £59 subsidy **£15.00**

See [www.elevenarches.org](http://www.elevenarches.org) for further information regarding event

### **Ladies Day 28 July 2018**

£30 Picnic ticket subsidy **£10**

£30 Grandstand/Paddock subsidy **£10**

£45 Premier Enclosure Subsidy **£15**

£50 Premier & Prosecco subsidy **£15**

£55 Essentials ticket/food/drinks voucher subsidy **£15**

See [www.newcastle-racecourse.co.uk](http://www.newcastle-racecourse.co.uk) for further details

For each of the above events, please complete the booking form on the NESLC website (see page 2 for access advice) or e-mail [pauline.wood1@hmrc.gsi.gov.uk](mailto:pauline.wood1@hmrc.gsi.gov.uk) for further information.

# NESLC exclusive member offer for

---



Show your NESLC membership card for 25% off (member and guests) all 'walk –in' bookings – not available for on-line bookings

Countless thrills await you at the UK's largest indoor inflatable theme park! Speed down extreme rocket drop slides, bounce on giant inflatable planets, suit up in inflatable sumo wrestling rings and take on the challenge on the gladiator podium with battle sticks and more.

Spread your wings and fly on "Skyrider" – the longest indoor ZipCoaster in Europe! With the uniqueness of flying through the air in a climbing harness, you really feel the flying, the dipping, and the swooping as your soar above the park.

We've not forgotten about our smallest explorers either! AstroTots Toddler Zone includes space slides, a bouncy castle, mini-obstacle course and junior inflatable activities - allowing younger bouncers to enjoy all the fun too. Get ready for an experience that is completely out of this world.

**InflataSpace Newcastle**  
**Units A3, A4 & A5**  
**Benfield Business Park**  
**Benfield Road**  
**Newcastle-upon-Tyne**  
**NE6 4NQ**

## Holiday Rentals in Northumberland

We have two family run, coastal cottages available in Northumberland. We welcome both children and well behaved dogs and offer both free WIFI and parking at each cottage. We have excellent reviews-100% of our customers would recommend us to their family/friends. **We can now offer a 10% discount to HASSRA/NESLC members** (week bookings only)

**Sea Haven Cottage** is located in the centre of Seahouses and can sleep up to 6 persons in three bedrooms. Everything is within 5 minutes walk of the cottage from the beach/harbour to the local restaurants/public houses.



**Sand Haven Cottage** is located in the village of Beadnell and can sleep up to 4 persons in 2 bedrooms with the added advantage of a sofa bed in lounge and large enclosed outdoor area with seating and gas BBQ.



### Amenities

- Electric heating with an additional log fire in Sea Haven
- Fully equipped kitchen with everything you need to cook a 3 course meal
- Bed linen and towels included
- Free wifi/playstation and wii console available together with a selection of DVDs/books and board games to keep everyone occupied
- We welcome families and a range of toys and baby equipment available on request.
- We operate a no smoking policy and do not accept all female/all male groups without consent from owner.

Our cottages are available to rent from Saturday to Saturday in peak periods and short breaks are available January to March and September to mid-December (3 night minimum). Enjoy a short break from as little as £10 per night!

For booking enquiries please contact email [havencottages@gmail.com](mailto:havencottages@gmail.com). Further information available on our website <http://holidaycottagenorthumberland.net/>

**Goldilocks and the Three Bears**

**Newcastle Theatre Royal**

**Wednesday 5 December 7pm**

**Tuesday 11 December 7pm**

**Wednesday 16 January 7pm**

Seats are in the middle/to the rear of the stalls

or in Rows D & E of the Grand Circle

**COST**

<b>NESLC MEMBERS</b>	<b>£18</b>
<b>FIRST CHILD GUEST</b>	<b>£18</b>
<b>SUBSEQUENT CHILD GUESTS</b>	<b>£22</b>
<b>ADULT GUESTS</b>	<b>Contact Organiser – see details below</b>

Please complete the booking form on the NESLC website (see page 1 for access advice) and forward it with your cheque to Theresa Parvin , CAS11, Room BP1201, Benton Park View.

Please specify where you would rather sit.

If you have any questions please e-mail the organiser – [theresa.parvin@hmrc.gsi.gov.uk](mailto:theresa.parvin@hmrc.gsi.gov.uk), do not contact the organiser by phone.

**PLEASE EMAIL THE ORGANISER AT THE TIME OF SENDING YOUR BOOKING FORM AND CONFIRM THE NUMBER OF PLACES REQUIRED.** The organiser will email you to confirm receipt of your booking form. Please email her if you do not hear from her within 2 weeks of sending your application. If you require a copy of the booking form please email the organiser.

**CLOSING DATE FOR RECEIPT OF BOOKING FORM –Friday 14 September 2018 or sooner if sold out**

## **CODE OF CONDUCT FOR SPECIAL OFFERS AND EVENTS ORGANISED BY NESLC**

**All attendees must adhere to the Civil Service/Organisational Code of Conduct (see reverse of booking form). Bookings made at members price cannot be sold on to non-members. Any member found doing so, may be suspended from membership and the balance will be due to bring the amount payable up to the guest price.**

### **Fabulous Fundraisers**

We've not had many responses recently with your fundraising exploits, please drop us a line with any fundraising you do so we can add to our totaliser and let RCSL and HASSRA national teams know what a generous lot the staff on Newcastle Estates are.

There has been some activities this year so far including.

Collections of items for North East Foodbanks and Cat and Dog shelters

#### **There has also been funds raised for:**

The Peoples Kitchen, The Teardrop Fund, 4Louis, Northumbria Blood Bikes, Consett Cat rescue, Benton Dog and Cat rescue, Maggies, The Charity for Civil Servants, Roy Castle Foundation, Marie Curie and so many more

#### **Which brings the yearly totals to:**

£5341.28 raised by RCSL members and £17683.74 raised by HASSRA members

**Making a total of £23025.02 raised by members on Newcastle Estates so far in 2018**

Don't forget to send us the totals of any money you raise so we can share your wonderful work by emailing [Alan.Borrowdale@dwp.gsi.gov.uk](mailto:Alan.Borrowdale@dwp.gsi.gov.uk) with your details

## PICTURE QUIZ

### Do you fancy winning a £25 gift voucher?

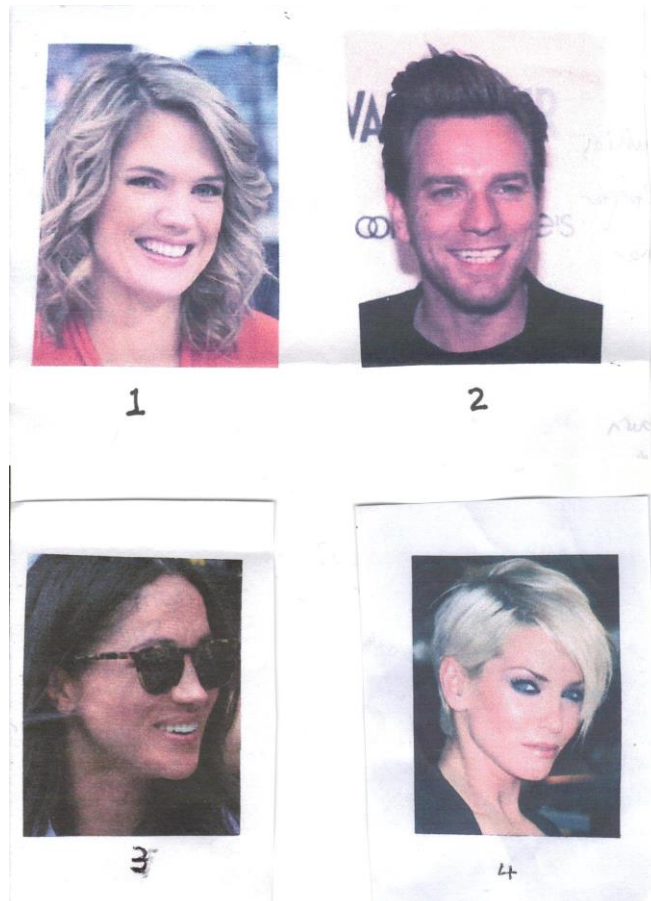
All you have to do is identify the 4 people below. Entries (1 per member) should be sent by e-mail to myself - [george.green9@blueyonder.co.uk](mailto:george.green9@blueyonder.co.uk).

Please put QUIZ in the subject field and state your full name, room number, telephone ext, the organisation you are a member of (HASSRA or RCSL) and your HASSRA membership number or HMRC PI number.

The closing date for entries is Friday 29 June and the first correct entry in a random draw will be declared the winner.

All entrants must be a member of HASSRA or RCSL. If you are not a member of either please see page 1 for details of how to join.

George Green  
Editor





## Result of picture quiz in Newsletter No. 1 of 2018:-.

The answers to the picture quiz are:

1. Keith Chegwin
2. Max Clifford
3. Fats Domino
4. Jana Novotna
5. Glen Campbell
6. Tara Palmer-Tomkinson
7. Roger Moore
8. Barry Norman
9. Liz Dawn
10. Rodney Bewes
11. John Surtees
12. David Cassidy

The winner, randomly selected by Terri Nicholson, NESLC Chair, is Anthony Peet from HMRC Scheme Cessation.

Anthony won a £25 gift voucher and he is pictured below receiving it from Jill Gardner, NESLC Treasurer.



## WHITEHOUSE FARM CENTRE

**Show your NESLC membership card for 20% off all ‘walk – in’ bookings – not available for on-line bookings**

Whitehouse Farm Centre is Northumberland’s largest family run Farm attraction spread over 40 acres, located south of Morpeth and just a mile off the A1.

The Farm is a great place for families and group visits of all ages enabling visitors to see, handle and feed a wide variety of animals from traditional breeds to more unusual and exotic species. There is always a full programme of hands on activities from meeting mini beasts & reptiles, hugging a bunny, stroking anything from a snake to a skunk, being mesmerised by meerkats & marmosets to having a hoot with the Owls!

There really is something for everyone, as well as animals & activities, there’s indoor & outdoor play areas to discover and explore, so it’s always *farmtastic* fun whatever the weather!!

### ***Would you like a game of Bowls?***

Then here is your chance to join a great bowling club in your area.

The Health & Security Bowls Club are a section of NESLC and we play our home matches at Blue Flames Sports Club, Whitley Park, Whitley Road, Benton, NE12 9SF. We are looking for new recruits who are members of NESLC including retired members. You can be any age - male or female - to join our busy club. Don’t worry if you haven’t played before as we give free coaching and advice and we can offer the choice to play most days, afternoons and evenings of the week during the Summer.

You’ll be pleasantly surprised how quickly you can get to grips with the basics of the sport. It’s an excellent way of getting fresh air and exercise as well as participating in a great competitive sport that doesn’t cost a fortune.

Our bowling green is nicely set in the grounds of the Blue Flames Sports Club in Benton where we have a good clubhouse and plenty of parking. It is only a short walk from Benton Metro.

The green is now open so why not get in touch to find out more. Or if you prefer, just visit the bowling green and ask any questions you might have. There is no obligation.

You can get in touch by telephone on 0776 345 8298 (Colin Bowman) or use email if you prefer - *mightybowman@blueyonder.co.uk* or:  
*George Green, 0750 321 7259, email george.green9@blueyonder.co.uk*

## **ANYONE FOR TENNIS?**

If you fancy having a go at tennis now could be your big chance. NESLC tennis club are looking to recruit some new members this year. We cater for all abilities and you don't need to be the next Andy Murray or anything like that. We pride ourselves on being a friendly little club and everyone is made to feel most welcome.

We play at Rockcliffe Tennis Club in Whitley Bay on the seafront not far from the Metro station and our usual club night is on a Monday although we sometimes play on a Tuesday instead. Games are arranged to try and make them as fair as possible and give everybody a variety of matches. For the more competitively inclined we have occasional club competitions although even with these the emphasis is very much on having fun.

Guest players are allowed a couple of games free of charge before deciding whether to join. Membership costs £15 per year and this includes all the games at Rockcliffe plus any indoor game arranged during the winter months. Tennis balls are provided free of charge.

If you would like any further information feel free to email me at [miguelvino@hotmail.com](mailto:miguelvino@hotmail.com). Hope to see you soon for a game.

Mike Turton (NESLC club secretary)

## NESLC TABLE TENNIS SECTION

The NESLC Eagles team finished third in the Premier Division of the Northumbria Winter League 2017-2018, with the North East Chinese Association (NECA) A team taking the title for the first time by just one point from the previous season's champions, Cramlington Casuals.

They are taking a sabbatical for the summer, but a new NESLC team of Pauline Long plus new members Rahul Chabbra and Mark Alexander, with Terry Duff and Trevor Linsley on standby, has been entered in Division 6 of the Northumbria Summer League, which commenced in May and continues until mid August.

Section members Terry Duff and Trevor Linsley were part of the NESLC Inland Revenue side that beat Wales 5-1 in the final of the plate team competition in April at Warwick University. Section members Pauline Long and Mark Alexander will be part of the North East side to represent HASSRA at the Winter Sports Festival in September at the same venue.

Two tables will be free for club practice nights each Monday in the Amble Inn (except Bank Holidays) from 6pm onwards, but priority must be given to scheduled home League matches to continue on a second table if they look likely to overrun, as the hall must be cleared, equipment put away tidily, and all players signed out by 10pm prompt. The Winter League is expected to commence in early to mid September.

The Section is open to all HASSRA/RCSL members, who can of course enter their own Regional and National competitions.

A small supply of bats for beginners can be provided, although it is advised that potential players should bring their own whenever possible. Match standard table tennis balls are supplied, and the annual subscription fee is only £10 to cover both summer and winter seasons. New players can come along on three occasions before being asked to consider joining the Section and pay the annual subscription.

There are back catalogues from various table tennis companies in the equipment room box for those who wish to order any items of equipment or clothing themselves.

Further details can be obtained from the Secretary/Treasurer, Pauline Long, tel. 0191 2854827 (home), 07939 438320 (mobile), or e-mail [pandglong1@gmail.com](mailto:pandglong1@gmail.com).

## NESLC Golf Section

The NESLC Golf society have regular outings during the year, a mix of 18 hole events played in the afternoon and full day 27 hole events, with suitable refreshments.

The 2018 season tee'd off at one of our early season favourite courses, but even Sharpley Golf course could not cope with the wind, rain and bitter conditions that we experienced that day. The event started but only a few made it through the front 9, and the decision to abandon the event and return to the clubhouse for some warm drinks was supported by all. But we will be going back to Sharpley on 25<sup>th</sup> May to play our traditional doubles competition for the Jubilee Salver.

Our 2<sup>nd</sup> event of the season was also cancelled due to the weather, but quickly rearranged for the following week when we visited Ryton Golf club to play for the Edinburgh Cup which was won by Gordon Witte.

Our next event was a first for the Golf Section, where 16 members went to Oulton Hall in Leeds for a 2 day event. We played for the New Scotland Trophy on the Sunday afternoon while the Monday morning competition was a friendly sweep. All members in attendance enjoyed the outing and having a regular 2 day event will be considered for future years. The remaining events for the 2018 season are as follows:

Fri 8/6/18	Tynemouth (18 holes) 10:00, 13:00
Wed 4/7/18	Wynyard (27 holes) 10:00, 13:00
Fri 3/8/18	Whickham (Captains Day) (27 holes) 10:00, 13:00
Wed 12/9/18	Durham City (27 holes) 10:00, 13:00
Tue 2/10/18	Alnwick (27 holes) 11:00, 13:00
Nov 2018	TBA (18 holes)

The events are open to all Golfers of all abilities, but Golfers need to be members of the NESLC Golf Society. Annual membership of the Golf Society costs £20, but members will recoup the membership fee by the discounted rates that member pay to play at the events.

Please contact the NESLC Golf Society Sec/Assistant Sec if you're interested in attending an event.

[Iwan.Owen@dwp.gsi.gov.uk](mailto:Iwan.Owen@dwp.gsi.gov.uk) or [graham.wright@hmrc.gsi.gov.uk](mailto:graham.wright@hmrc.gsi.gov.uk)

It's competitive golf ...but played in a very friendly environment.

# **TABLE TOP GAMING SECTION**

## **Calling all NESLC members!**

We are aiming to set up a table-top gaming club to meet up on regular occasions for war-gaming and table-top roleplaying games.

Some of our regular attractions could include :

**Warhammer Age of Sigmar.**

**Warhammer 40,000**

**Dungeons and Dragons**

**Star wars: X-Wing / Armada**

**Magic the Gathering**

But it doesn't just stop there. Any additional suggestions will be welcomed.

Ultimately our aim will be to meet up at least twice a month, enjoy sessions of table-top war-gaming and roleplaying. We understand that some people might prefer one type of game to another so we will look into evenings where all types of games are available.

Eventually we will be looking into local competitions and tournaments that we can participate in as a section.

If we manage to get enough interest for this group then NESLC will help by providing us with funding for essential tools and equipment needed to hold these sessions. They will also support us when entering tournaments and competitions!

**So the more people interested the better. What are you waiting for??**

If you are interested you can contact either **Sean Reed** or **Joseph Archer** at:

**Neslc.tga@gmail.com**

If we secure enough members there will also be scope to invite associate members from outside HMRC and DWP.

## **Onsite Gyms @ Benton Park View, Durham House and Tyne View Park**

Some people may not be aware that we have excellent onsite gym facilities at Benton Park View, Durham House and Tyne View Park. All three facilities offer fantastic value for money and all include extensive ranges of both resistance and cardiovascular equipment. As well as the gyms themselves all three sites have changing and showering facilities available.

In terms of cost the gyms offer the best value for money available anywhere. A full 12 calendar months membership at the Amble Inn Gym @ Benton Park View is only £60 both Durham House and Tyne View Park are only £36 for 12 calendar months.

This, as I am sure you will agree is a fantastic opportunity to take out a gym membership at a price that is well below that of normal commercial gyms. For those of you that have never used a gym before or even if it is some years since you have done so there is an instructor available at set times at all three gyms to offer advice on training and nutrition to help you achieve your fitness goals.

For those of you who would maybe prefer to exercise in a class environment the Amble Inn Sports Hall offers 5 exercise classes of varying intensities per week.

On Tuesday and Thursday at 8am we have Metafit sessions which encompass both cardiovascular and strength components within the class. These sessions would be suitable for all levels of fitness. Again on a Tuesday at 12 noon there is a very high intensity class which is designed to push those of a higher fitness level, the class involves mainly cardiovascular work but there are some muscular strength/ endurance components included.

Thursday 12 noon there is a traditional Circuit Training class which includes some cardiovascular work but is built mainly around work stations that stress various muscle groups including the abdominals. Again this session would be suitable for all fitness levels.

Our last class of the week is again on a Thursday at 4pm and is the latest sensation to hit the fitness world, which of course is Zumba! Zumba is described as the all over dance party workout and is a fun way to burn calories and use muscles in a manner that traditional exercises classes could not. This class is suitable for anybody of any fitness level because the exercise programme contains a fun element whilst at the same time burning calories.

All classes are £3.00 except Zumba which is free. The only requirement to partake in any of the classes is that you are currently a member of either HASSRA or RCSL.

## **Amble Inn Sports Hall Hire**

Those of you that work at the Benton Park View Site will be aware that we have a superb sports hall located within the Amble Inn.

The sports hall can accommodate a variety of sports and is available for casual bookings by RCSL or HASSRA members. Table tennis, badminton and 5 a side can all be booked for a cost of only £15 for the full use of the hall for a full hour. Please note that we can provide a table tennis table and badminton nets and posts but personal equipment like racquets, bats, shuttlecocks etc. must be provided by the individuals playing. Likewise a casual booking for 5 a side will necessitate one of the players providing a 5 a side specific football.

Anyone requiring booking the hall must book and pay at the same time and this can be done at the Amble Inn sports office which is located at the foot of the stairs in the Amble Inn, the opening times are as follows:

Mon: 10am – 11am

Tues: 10:30am – 11:30am

Wed: 10am – 11am

Thurs: 10am – 11am

Fri: 10:30am – 11:30am

It has been mentioned that the hall is available for 5 a side football, but individuals who are interested in playing but do not necessarily want to organise 9 other players can contact the sports office during the above times or could telephone Steve Harris on 07790085104 and leave their details as one or two regular teams who use the hall are often looking for players to make the numbers up.

For any information at all regarding use of the hall or booking of the hall please do not hesitate to contact Steve on the above number.