



# NESLC

## Newcastle Estate Sports & Leisure Club Newsletter: Xmas Edition 2017

Merry Xmas to all NESLC members and their families and welcome to the Xmas edition of the NESLC Newsletter. In this edition we have a huge variety of offers and a Secret Santa picture quiz. Also included are details of our AGM and celebration party.

I hope you enjoy what, I think, is an excellent read.

George Green  
Editor

**If you wish to join NESLC please ring Steve Harris, NESLC Gym Manager on 07790 085104. If you are unsure about whether you are a member:-**

You are an NESLC member if:

Benton Park View (BPV) - you are in HASSRA or RCSL unless you are a HASSRA member in the local office club CMG (Room BP5302 only).

Tyneview Park (TVP) - you are in HASSRA unless you are a member in the local office clubs (Newcastle Pension Centre, NCIB/FES), or an RCSL North member who has opted to retain your NESLC membership.

Durham House (DH) - you are in HASSRA or an RCSL North member who has opted to retain your NESLC membership.

Waterview Park (WVP) - you are an RCSL North Member who has opted to retain your NESLC membership.

If you are a HASSRA member in a local office club at any of the above locations you can choose to join NESLC for an additional £8 per year.

If you are an RCSL North member at TVP, WVP or DH and have not opted to retain your NESLC membership you can join NESLC for an additional £8 per year.

If you are unsure that you have retained your NESLC membership please contact:-

Alan Borrowdale (alan.borrowdale@dwp.gsi.gov.uk) for confirmation for DWP members and  
Lynsey Wilkinson (linsey.scurr@hmrc.gsi.gov.uk) for confirmation for RCSL members.

### **How do I access the NESLC Website?**

**RCSL Members** Those who work in HMRC can access the NESLC website via the Internal Intranet site. Valuation Office staff should follow the instructions below for HASSRA members.

**HASSRA Members** (those who work in DWP) via the HASSRA North East Region NESLC Website which can be accessed as follows: Open HASSRA main page on the internet; Go to the regional North East Page; Scroll down and in the right hand column click on the **clubs** link to open page for NESLC.

The following electronic link can be used to access the NESLC page on the HASSRA website.

[http://www.hassra.org.uk/regions/northeast/DWP\\_S246803.asp#TopOfPage](http://www.hassra.org.uk/regions/northeast/DWP_S246803.asp#TopOfPage)

# **NESLC AGM**

## **NEWCASTLE ESTATES SPORT & LEISURE CLUB AGM AND CELEBRATION PARTY**

**Celebrate our successes at our AGM from 4pm then join us after  
at the end of year celebrations party!!**

**FRIDAY MARCH 9TH 2018**

**AT THE INNISFREE SOCIAL CLUB**

**LONGBENTON**

**4pm prompt start**

**Fantastic band, buffet and a huge array of raffle prizes and other  
freebies for all our members.....**

**What are you waiting for?**

**You must be a member to attend so register your place now via  
email to:**

**[Alan.borrowdale@dwp.gsi.gov.uk](mailto:Alan.borrowdale@dwp.gsi.gov.uk)**



Revenue & Customs  
Sports & Leisure



## **Newcastle Estate Sport & Leisure Club**

### **NESLC Membership Cards**

**From 2017 in order to take part in NESLC offers and trips you will be required to have a membership card**

**The cards are free to members of HASSRA and RC SL at Benton Park View, Tyne View Park and Durham House with some exceptions. See page 1 for advice on NESLC membership.**

**In order to receive your membership card please send an email to: [Alan.borrowdale@dwp.gsi.gov.uk](mailto:Alan.borrowdale@dwp.gsi.gov.uk)**

**With your name, email address and location. You will then be notified of where and when to pick up your card.**

**Please see Appendix 1 on page 16 for information on Code of Conduct for special offers and events organised by NESLC**

## **War Horse at the Sunderland Empire**

Wednesday the 13th of February 2019 @ 7.30pm

Seats are at the rear of the stalls in rows V, W & X

**PLEASE NOTE: Elevated scenes may not be visible**

### **Cost:**

NESLC Members: £20.50

Guests: £33.50

Please complete the booking form on the NESLC website (see page 1 for access advice) and forward it with you cheque to Theresa Parvin, CAS 11, Room BP1201, Benton Park View. If you have any questions please email the organiser,

[Theresa.Parvin@hmrc.gsi.gov.uk](mailto:Theresa.Parvin@hmrc.gsi.gov.uk)

Please DO NOT contact the organiser by phone. Closing date for receipt of booking forms is Friday the 30th of March 2018 (or sooner if sold out)

PLEASE EMAIL THE ORGANISER AT THE TIME OF SENING YOUR BOOKING FORM. The organiser will email you to confirm receipt of your booking form. Please email her if you don't hear from her with in 2 weeks of sending your application.

## **The Jersey Boys @ Newcastle Theatre Royal**

Thursday the 9th of August 2018 @ 7.30pm

Seats are in the stalls in rows K, L & M

### **Cost:**

NESLC Members: £27.50

Guests: £45.50

Please complete the booking form on the NESLC website (see page 1 for access advice) and forward it with you cheque to Theresa Parvin, CAS 11, Room BP1201, Benton Park View. If you have any questions please email the organiser,

[Theresa.Parvin@hmrc.gsi.gov.uk](mailto:Theresa.Parvin@hmrc.gsi.gov.uk)

Please DO NOT contact the organiser by phone. Closing date for receipt of booking forms is Friday the 30th of March 2018 (or sooner if sold out)

PLEASE EMAIL THE ORGANISER AT THE TIME OF SENDING YOUR BOOKING FORM. The organiser will email you to confirm receipt of your booking form. Please email her if you don't hear from her within 2 weeks of sending your application.



# LUMLEY CASTLE

*your special place in history*

**Elizabethan Banquet - Friday 11th May 2018**

NESLC are pleased to be able to offer a night with a difference at no ordinary hotel!

**The evening includes:**

**Five course banquet Feast Two goblets of wine and Mead Entertainment by the Lords and Ladies of the Court.**

**First Remove - BARON'S BROTH**

Homemade vegetable broth served with wholemeal bread

**Second Remove - FYSHE WITH POTATO**

Fish with creamed potato, topped with cheese served in a scallop shell

**Third Remove - SPARE RIBS**

Succulent ribs served in a red wine sauce with herbs

**Fourth Remove - CHECKYN IN MEAD**

Chicken cooked in mead sauce, jacket potato, salad and basil butter

**Fifth Remove - APPLE CRUMBLE**

A delight to end your repast

Vegetarian options available

**Times** - Dungeon Bar opens at 7pm, called to feast at 8pm

**Prices:**

**NESLC members = £52.50**

**Guests = £72.50**

**Elizabethan Banquet & Overnight Stay (£20 supplement for singles)**

**Breakfast**

**Closing date for bookings is 12 April 2018 or sooner if sold out**

Email [Sonya.Peacock@hmrc.gsi.gov.uk](mailto:Sonya.Peacock@hmrc.gsi.gov.uk) for an application form

# **FABULOUS FUNDRAISERS**

Another huge response since the last newsletter with more details of what fundraising activities you have been up to.

## **There have been collections of:**

Food and blankets for Westgate Ark

Spectacles for Marie Curie

Food Items for North East Foodbanks

## **Staff have been:**

Walking all over Cancer with 10000 steps a DAY

Growing (and Shaving) beards for Movember

Running the Great North Run and Memory Walking for Alzheimer's

Staying sober for October

## **There have been funds raised for:**

Northumbria Blood Bikes, RNLI, Consett Cat Rescue,  
Benton Dog and Cat rescue,

Maggies, The Charity for Civil Servants, Roy Castle Foundation,  
RVI Children's Hospital, York against Cancer, St Oswalds Hospice, NSPCC,  
Marie Curie and so many more.

## **Which brings the yearly total to:**

**£38,750.66 raised by RCSL members and  
£21,637.67 raised by HASSRA members**

**Making a massive total £60,388,33 raised  
by members on Newcastle Estates in  
2017**

Don't forget to send us the totals of any money you raise so we can share your wonderful work by emailing [Alan.Borrowdale@dwp.gsi.gov.uk](mailto:Alan.Borrowdale@dwp.gsi.gov.uk) with your details

# TABLE TOP GAMING SECTION

## Calling all NESLC members!

We are aiming to set up a table-top gaming club to meet up on regular occasions for war-gaming and table-top roleplaying games.

Some of our regular attractions could include :  
**Warhammer Age of Sigmar.**

**Warhammer 40,000**

**Dungeons and Dragons**

**Star wars: X-Wing / Armada**

**Magic the Gathering**

But it doesn't just stop there. Any additional suggestions will be welcomed.

Ultimately our aim will be to meet up at least twice a month, enjoy sessions of table-top war-gaming and roleplaying. We understand that some people might prefer one type of game to another so we will look into evenings where all types of games are available.

Eventually we will be looking into local competitions and tournaments that we can participate in as a section.

If we manage to get enough interest for this group then NESLC will help by providing us with funding for essential tools and equipment needed to hold these sessions. They will also support us when entering tournaments and competitions!

**So the more people interested the better. What are you waiting for??**

We will be aiming to commence sessions after Christmas, so if you are interested you can contact either **Sean Reed** or **Joseph Archer** at:

**Neslc.tga@gmail.com**

If we secure enough members there will also be scope to invite associate members from outside HMRC and DWP.

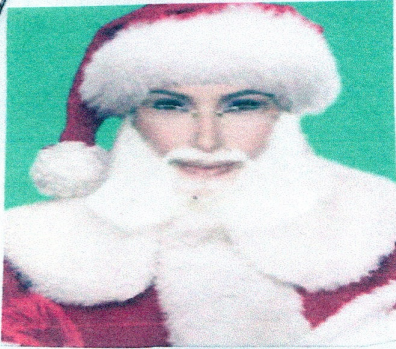


## SECRET SANTA QUIZ

Do you fancy winning a £25 gift voucher?

All you have to do is identify the 10 people below. Entries (1 per member) should be sent by email to myself, [george.green9@blueyonder.co.uk](mailto:george.green9@blueyonder.co.uk) Please put QUIZ in the subject field and state your name, room number, telephone Ext, the organisation you are a member of, (HASSRA or RC SL) and your HASSRA membership number or HMRC PI number. The closing date for entries is Monday the 31st of December and the first correct entry in a random draw will be declared the winner. All entrants must be a member of HASSRA or RC SL. If you are not a member of either please see page 1 for details of how to join.

George Green  
Editor



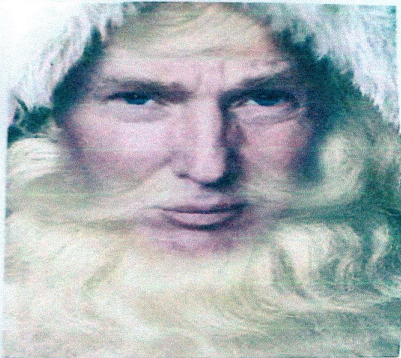
1



2



3



4



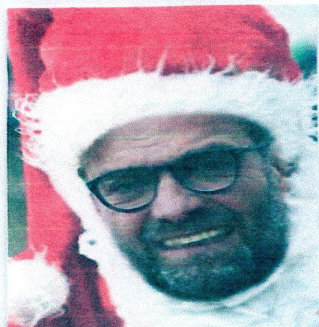
5



6



7



8



9



10



# Result of quiz in Newsletter no. 3 of 2017.

The questions together with the correct answers are:

What did George Crum invent - Crisps, Cornflakes or Peanut Butter.

**Answer - Crisps**

Who is the only Oscar winner with an Oscar winning mother and father - Michael Douglas, Liza Minnelli or Sofia Coppola

**Answer – Liza Minelli**

Which country did Denmark replace when they came into the finals of Euro 1992 at a late stage - Yugoslavia, Greece or Czechoslovakia.

**Answer - Yugoslavia**

In what year was Taylor Swift born - 1985, 1989 or 1992.

**Answer - 1989**

The new Doctor Who Jodie Whittaker was brought up in –Hendon, Hereford or Huddersfield.

**Answer - Huddersfield**

The TV programme Countdown was launched in - 1972, 1982 or 1992.

**Answer - 1982**

Sean Wilson was in which TV soap for more than 20 years - East Enders, Emmerdale or Coronation Street.

**Answer – Coronation Street**

Everything I do (I do it for you) was a no 1 hit in Britain for Bryan Adams in - 1986, 1991 or 1996

**Answer - 1991**

Who had a no 1 hit in 2013 with We Can't Stop - Britney Spears, Miley Cyrus or Ellie Goulding.

**Answer – Miley Cyrus**

In which English county is Wokingham – Berks, Surrey or Kent

**Answer - Berkshire**

The winner, randomly selected by Dave Henderson, Newsletter Assistant Editor is Doreen Patterson from DWP Performance Measurement Business Support Team.

Doreen won a £25 gift voucher and she is pictured below receiving it from Jill Gardner, NESLC Treasurer.



## **WALKING FOOTBALL**

NESLC will be launching Walking Football Taster Days in the Amble Inn in January 2018 so why don't you come along and give it a try!!!

A free session will be held on the following Wednesdays between 11.30am and 12.30pm:-

10th of January 2018

17th of January 2018

24th of January 2018

31st of January 2018

Please contact [Jill.Westgate@hmrc.gsi.gov.uk](mailto:Jill.Westgate@hmrc.gsi.gov.uk) to register and obtain further information.

## **NESLC CINEMA TICKETS**

Don't forget NESLC have discount tickets for sale:

Cineworld (Newcastle & Boldon) £6.50

Odeon (Silverlink & Metrocentre) £5.75

VUE (Cramlington & Gateshead) £6.25

Empire (Sunderland) £5.25 (Limited Stock)

Please see the NESLC website (see page 1 for access advice) for further details. The following link can be used for members working in HMRC.

<http://internal.active.hmrci/page/discounted-tickets-and-reduced-price-admissions>

Or email Cheryl ([Cheryl.wetherell@hmrc.gsi.gov.uk](mailto:Cheryl.wetherell@hmrc.gsi.gov.uk))

# SEAHAM HALL IS BACK...

## BACK FOR 2018

### NESLC members only

*Seaham Hall Serenity Spa*



- Why not pamper yourself with a fabulous day out at Seaham Hall Serenity Spa for the unbelievable price of only £50 per member.



- WE have a **limited** number of vouchers at the Spa offer which includes:
- Mellow Mid-week Spa Day
- Includes Complimentary use of fluffy and indulgent robes, towels and slippers. Full use of the award winning Spa facilities from 10am to 3pm.
- An indulgent two course lunch in our Pan-Asian restaurant, The Ozone.
- A deeply relaxing 45 minute Serenity Signature Massage - tailored to leave you feeling calm and relaxed.
- Valid Monday to Friday only and must be used by the end of June 2018.

• **Usually £100.00 NESLC MEMBER £50**

- **THIS OFFER IS MEMBERS ONLY - NOT A MEMBER THEN ENSURE YOU JOIN OUR LOCAL SPORT ORGANISATION RC SL OR HASSRA**
- **NOT ABLE TO JOIN RC SL OR HASSRA? THEN YOU MAY BE ABLE TO JOIN AS AN ASSOCIATE MEMBER - SEE THE NESLC WEBSITE (see page 1 for access advice).**
- Email Phil Darling (phil.darling@hmrc.gsi.gov.uk) to request a booking form. Please enter SEAHAM HALL in the subject field

# NESLC TABLE TENNIS SECTION

One team (NESLC Eagles was entered in the Northumbria Winter League which commenced in mid September and are currently lying fourth in the Premier Division.

The HASSRA Winter Sports Festival at Warwick University took place over the weekend prior to the season's start. Pauline Long and her partner Alison McKim (Stockton Job Centre) representing HASSRA North East, lost 3 games to 1 in the Women's double final against their old adversaries from London, while the Women's singles holder Alison lost her semi-final to a very good new young junior from Scotland, who went on to win the competition. In the meantime Pauline retained her Women's singles plate title from last year. We had no success in the Men's and mixed competitions.

Obviously I wasn't present at the equivalent RCSL event, but I did hear that Rob Dodds (retired member) won the Men's singles plate competition while Steve Dickenson (main site) took the Band 2 title.

Two tables will be free for club practice nights each Monday in the Amble Inn (except Bank Holidays) from 6pm onwards, but priority must be given to scheduled home league matches to continue on a second table if they look likely to overrun as the hall must be cleared, equipment put away tidily, and all players signed out by 10pm prompt.

The section is open to all HASSRA/RCSL members who can enter their own Regional and National competitions.

A small supply of bats for beginners can be provided although that potential players should bring their own whenever possible. Match standard table tennis balls are supplied and the annual subscription fee is only £10 to cover both Summer and Winter seasons. New players can come along on three occasions before being asked to consider joining the section and pay the annual subscription.

There are back catalogues from various table tennis companies in the equipment room box for those who wish to order and items of equipment or clothing themselves.

Further details can be obtained from the Secretary/Treasurer, Pauline Long on 0191 2854827 (home) 07939 438320 (mobile) or email [pandglong@gmail.com](mailto:pandglong@gmail.com)



# **NESLC Golf Section**

The NESLC Golf Society have regular outings throughout the year, March to November, a mix of 18 hole events played in the afternoon and full day 27 hole events.

All events for the season have now been completed with the AGM and Trophy presentation being the only remaining activity for 2017.

In recent months the Society visited Westerhope, Whitley Bay, Bamburgh Castle and Tyneside with each event being well attended, played in reasonable weather conditions and enjoyed by all attendees.

One of the main objectives of the Golf Society is to try and ensure that all members have an opportunity to win and in 2017 we achieved this goal with 9 different winners. The Handicap Secretary did an excellent job in managing players handicaps, ensuring winners were suitably “handicapped” for future events.

The 2017 AGM and Trophy presentation evening was held on the 7th of December at the City of Newcastle Golf Club where members reviewed and celebrated the success of the 2017 season and look ahead to 2018.

The 2018 season will commence in March 2018 with a friendly 18 hole doubles event at a seaside course, followed by another 8 events across the North East. Full details of the date and venues will be published in January 2018.

The Society caters for all Golfers of all abilities but all need to be members of the NESLC Golf Society to play in an event. Annual membership costs £20 but members will recoup the fee by the discounted rates that members pay to play at events. Contact the NESLC Golf Society Secretary/Assistant Sec if you are interested in attending an event. It's competitive golf but played in a very friendly manner.

**Iwan.owen@dwp.gsi.gov.uk or graham.Wright@hmrc.gsi.gov.uk**

# Onsite Gyms @ Benton Park View, Durham House and Tyne View Park

Some people may not be aware that we have excellent onsite gym facilities at Benton Park View, Durham House and Tyne View Park. All three facilities offer fantastic value for money and all include extensive ranges of both resistance and cardiovascular equipment. As well as the gyms themselves all three sites have changing and showering facilities available.

In terms of cost the gyms offer the best value for money available anywhere. A full 12 calendar months membership at the Amble Inn Gym @ Benton Park View is only £60 both Durham House and Tyne View Park are only £36 for 12 calendar months.

This, as I am sure you will agree is a fantastic opportunity to take out a gym membership at a price that is well below that of normal commercial gyms. For those of you that have never used a gym before or even if it is some years since you have done so there is an instructor available at set times at all three gyms to offer advice on training and nutrition to help you achieve your fitness goals.

For those of you who would maybe prefer to exercise in a class environment the Amble Inn Sports Hall offers 5 exercise classes of varying intensities per week.

On Tuesday and Thursday at 8am we have Metafit sessions which encompass both cardiovascular and strength components within the class. These sessions would be suitable for all levels of fitness. Again on a Tuesday at 12 noon there is a very high intensity class which is designed to push those of a higher fitness level, the class involves mainly cardiovascular work but there are some muscular strength/ endurance components included.

Thursday 12 noon there is a traditional Circuit Training class which includes some cardiovascular work but is built mainly around work stations that stress various muscle groups including the abdominals. Again this session would be suitable for all fitness levels.

Our last class of the week is again on a Thursday at 4pm and is the latest sensation to hit the fitness world, which of course is Zumba! Zumba is described as the all over dance party workout and is a fun way to burn calories and use muscles in a manner that traditional exercises classes could not. This class is suitable for anybody of any fitness level because the exercise programme contains a fun element whilst at the same time burning calories.

All classes are £3.00 expect Zumba which is free. The only requirement to partake in any of the classes is that you are currently a member of either HASSRA or RCSL.

## Amble Inn Sports Hall Hire

Those of you that work at the Benton Park View Site will be aware that we have a superb sports hall located within the Amble Inn.

The sports hall can accommodate a variety of sports and is available for casual bookings by RCSL or HASSRA members. Table tennis, badminton and 5 a side can all be booked for a cost of only £15 for the full use of the hall for a full hour. Please note that we can provide a table tennis table and badminton nets and posts but personal equipment like racquets, bats, shuttlecocks etc. must be provided by the individuals playing. Likewise a casual booking for 5 a side will necessitate one of the players providing a 5 a side specific football.

Anyone requiring booking the hall must book and pay at the same time and this can be done at the Amble Inn sports office which is located at the foot of the stairs in the Amble Inn, the opening times are as follows:

Mon: 10am – 11am

Tues: 10:30am – 11:30am

Wed: 10am – 11am

Thurs: 10am – 11am

Fri: 10:30am – 11:30am

It has been mentioned that the hall is available for 5 a side football, but individuals who are interested in playing but do not necessarily want to organise 9 other players can contact the sports office during the above times or could telephone Steve Harris on 07790085104 and leave their details as one or two regular teams who use the hall are often looking for players to make the numbers up.

For any information at all regarding use of the hall or booking of the hall please do not hesitate to contact Steve on the above number.

## **APPENDIX 1 - CODE OF CONDUCT FOR SPECIAL OFFERS AND EVENTS ORGANISED BY NESLC**

**All attendees must adhere to the Civil Service/Organisational Code of Conduct (see reverse of booking form). Bookings made at members price cannot be sold on to non-members. Any member found doing so, may be suspended from membership and the balance will be due to bring the amount payable up to the guest price.**