



NESLC

Newcastle Estate Sports & Leisure Club
June Newsletter No 2 2020

Welcome to the latest issue of the NESLC Newsletter. As you will know, all of our activities and events have been suspended due to the Coronavirus. This issue is naturally limited but does include an update from the NESLC Chair and Committee Members. Also included is details of the exploits of Katherine Davis from HMRC on main site who represented the Civil Service Athletic Association in January.

I hope you enjoy this limited Newsletter and I would be interested to hear your thoughts on it which should be sent by email to George.Green9@blueyonder.co.uk

George Green
Editor

MESSAGE FROM NESLC OFFICERS

We all hope you are staying safe, during this bizarre time. We are obviously not organising any new events or trips until we know more of when we can.

There are some trips still being advertised that have already been booked for the back end of 2020 or 2021, so please keep an eye on what's available!

We would like to ask you to think about future events/trips you would like to see us run?

Do you have a favourite, is there something that we have never done before? Do you want to run a trip but would like full support from our Social Committee?

Send your ideas to neslctickets@yahoo.co.uk or if you are on Social Media contact us via Facebook NESLC!!!!

So what next – Well NESLC have been running now for 15 years and we want to celebrate that with you all again, like we did at our 10 year celebration in 2015, but unfortunately due to the current situation we can't do this right now, but we will as soon as we get the chance, so watch out for further updates as its going to be something special!!!!

NESLC Officers

You are an NESLC Member if:

Benton Park View (BPV) - you are in HASSRA or RCSL unless you are a HASSRA member in the local office club CMG (Room BP5302 only).

Tyneview Park (TVP) - you are in HASSRA unless you are a member in the local office clubs (Newcastle Pension Centre, NCIB/FES), or an RCSL North member who has opted to retain your NESLC membership.

Durham House (DH) - you are in HASSRA or an RCSL North member who has opted to retain your NESLC membership.

Waterview Park (WVP) - you are an RCSL North Member who has opted to retain your NESLC membership.

If you wish to join NESLC please ring Steve Harris, NESLC Gym Manager on 07790 085104. If you are unsure about whether you are a member:-

If you are a HASSRA member in a local office club at any of the above locations you can choose to join NESLC for an additional £8 per year.

If you are an RCSL North member at TVP, WVP or DH and have not opted to retain your NESLC membership you can join NESLC for an additional £8 per year.

If you are unsure that you have retained your NESLC membership please contact:- Alan Borrowdale (alan.borrowdale@dwp.gov.uk) for confirmation for DWP members and Lynsey Wilkinson (linsey.wilkinson@hmrc.gov.uk) for confirmation for RCSL members.

How do I access the NESLC Website?

RCSL Members Those who work in HMRC can access the NESLC website via the Internal Intranet site. Valuation Office staff should follow the instructions below for HASSRA members.

HASSRA Members (those who work in DWP) via the HASSRA North East Region NESLC Website which can be accessed as follows: Open HASSRA main page on the internet; Go to the regional North East Page; Scroll down and in the right hand column click on the **clubs** link to open page for NESLC.

<https://www.hassrashop.org.uk/north-east-clubs>

NESLC is now on the internet!

Due to a change within the HASSRA platform our NESLC pages are now available to view on the internet. You do not have to be a HASSRA member to view the pages and you can view them from anywhere. All our offers and trips are here:

Keep checking regularly for frequent updates

NESLC Membership Cards

NESLC Membership Cards In order to take part in NESLC offers and trips you will be required to have a membership card. The cards are free to members of HASSRA and RCSL at Benton Park View, Tyne View Park and Durham House with some exceptions. See page 1 for advice on NESLC membership.

In order to receive your membership card please send an email to: Alan.Borrowdale@dwp.gov.uk with your name, email address and location. You will then be notified of where and when to pick up your card.

NESLC MEMBERS - WE NEED YOU TO JOIN US

Volunteer with us, any help you can give, large or small. For further information contact alan.borrowdale@dwp.gov.uk

Feel you're missing out?

Do you want NESLC updates direct to your inbox?

Email Alan.Borrowdale@dwp.gov.uk with the subject 'Updates' to receive offers as they are released

CODE OF CONDUCT FOR SPECIAL OFFERS AND EVENTS ORGANISED BY NESLC

All attendees must adhere to the Civil Service/Organisational Code of Conduct (see reverse of booking form). Bookings made at members price cannot be sold on to non-members.

Any member found doing so may be suspended from membership and the balance will be due to bring the amount payable up to the guest price.

**15 YEARS AS A SPORTS AND SOCIAL CLUBAND STILL GOING
STRONG**

NEWCASTLE ESTATES SPORTS AND LEISURE CLUB (NESLC)



Hello NESLC Member,

I hope you are all staying safe and taking care of each other at this strange time we are living in at the moment.

NESLC has now been running for 15 years, some may recall in 2015 we held a 10-year celebration, and this proved to be a huge success. Before the lockdown we were planning a 15-year celebration but sadly that has been put on hold until next year, where we hope it to be a great event and will be advertising this when we get the all clear to do so. So please keep a look out for more information later in the year, VIA OUR INTRANET PAGES, NEWSLETTERS AND our FB page.

We are looking at future events for 2021, so please come forward and email the social secretary at neslctickets@yahoo.co.uk with any ideas, and even better offer to run an event, full support will be given, but its your way of been involved and helping this great club continue for another 15 years.

Thank you and stay safe

Terri Nicholson

NESLC Chair

Lumley Castle Elizabethan Banquet and Overnight Stay

Friday 27th November 2020

Come live like lords and ladies of a bygone age and enjoy an evening of fun, laughter and merriment. Five Course Banquet Feast, Goblet of Wine and Goblet of Mead, Entertainment by the Lords and Ladies of the Court and Disco music in our Dungeon.

Our special package also includes an overnight stay with full breakfast the morning after

NESLC Member - £49.50

Guest £89.50

Please enquire with Organiser if you require Single Occupancy

Please note there will be an additional charge for single occupancy

Closing dates for this marvellous event is Friday 4th September 2020 (or sooner if sold out)

If you would like an application form, please contact [Sonya P HYPERLINK](mailto:sonya.peacock@hmrc.gov.uk)
"<mailto:sonya.peacock@hmrc.gov.uk>"HYPERLINK

Result of quiz in Newsletter No 1 of 2020:-

The winner of this competition is Caroline Meachen, DWP FG Reporting & Production Team. Caroline won a £25 gift voucher.

Here are the questions and answers.

They all share the same surname. Who are they?

1. A TV presenter who has appeared many times on the TV show Loose Women.

ANSWER - Kaye Adams

2. An American actress who made her film debut in 1999. She appeared in a musical comedy featuring puppets in 2011. **ANSWER - Amy Adams**

3. He sang a track in a Robin Hood film and collaborated with Sting and Rod Stewart on a single that topped the charts worldwide. **ANSWER - Bryan Adams**

Would you like to win a £25 gift voucher?

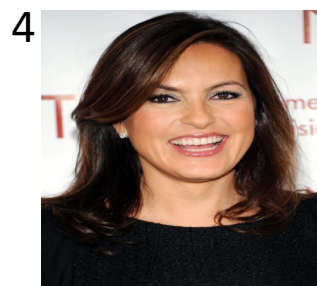
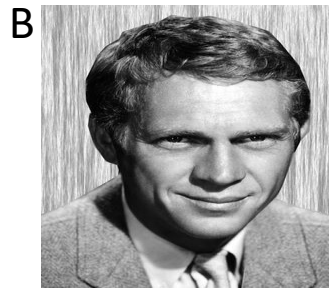
All you have to do is correctly answer the questions below. Entries (1 per person) should be sent to myself – george.green9@blueyonder.co.uk

Please put QUIZ in the subject field and state your full name, room number, ext and the organisation you are a member of (HASSRA or RCSL) and your HASSRA Membership number or HMRC PI number.

The closing date for entries is Friday July 3rd and the first correct entry in a random draw will be declared the winner.

All entrants must be a member of HASSRA or RCSL. If you are not a member of either please see page 1 for details of how to join.

Match the parent with their offspring? Simply match a letter to a number - A=1 etc.



NESLC TABLE TENNIS SECTION

Sadly as you will all be aware at the time of writing (end of May), most Sections will have been unable to function at least in the Amble Inn, as the Sports Hall is currently closed for all activities due to Covid 19.

We hope to resume table tennis in due course, but in the meantime it has been suggested that each Section should contribute anecdotes and/or memories for this current issue.

In the 1960's/70's, MPNI /MOSS (as it was then) had at its maximum 8 teams competing at various levels in the Northumbria Winter League, and that was in the days of 4 players a side, instead of 3 as at present. Several of our members also won County, Departmental and various tournament honours, and Andrew Wilkinson even took the European RCSL men's singles title one year. This last achievement undoubtedly helped our Section to win the Section of the Decade award in 2015. Each member at that time was given a small trophy memento of this achievement.

Unfortunately our membership has declined somewhat since then, and we were unable to enter an NESLC team in the Northumbria Winter League this season as not enough players were able to commit themselves to regular match play for various reasons. Obviously, because of Covid-19, this season's Summer League has also been cancelled.

I have not heard further about whether or not these competitions will still be able to take place, but I assume at present that players from both RCSL and HASSRA will be needed in due course to take part in their respective table tennis competitions at the University of Warwick. For further details, please contact your local representative. You do not need to be a Section member to take part (although it would be nice if you were), as long as you are a member of either RCSL or HASSRA, even if you happen to be retired.

I will inform current Section members when I hear that the Amble Inn Sports Hall is open again for Monday club practice, commencing at 6pm (except for Bank Holidays). In the meantime, three tables are generally available if required, depending on attendance, but the hall must be cleared, equipment put away tidily, and all players signed out by 10pm prompt.

A small supply of bats for beginners can be provided, although it is advised that potential players should bring their own whenever possible. Match standard table tennis balls are supplied, and the annual subscription is only £10 to cover both summer and winter seasons. We are always actively looking for new members, both from the main site and outstations, and any prospective players can come along on three occasions before being asked to consider joining the Section and pay the annual subscription.

There are back catalogues from various table tennis companies in the equipment room box for those who wish to order any items of equipment or clothing themselves.

Further details can be obtained from the Secretary/Treasurer, Pauline Long, tel. 0191 2854827 (home), 07939 438320 (mobile), or e-mail pandglong1@gmail.com

Well done to our cross country runner!

In January 2020, Katherine Lee from HMRC, Benton Park View, represented the Civil Service Sports Association (CSSA) in the annual SEAX trophy race.

The SEAX is the ultimate prize in the Civil Service running calendar with the RAF having won the trophy for the last 3 years. Despite two of the RAF team dominating the race from the start and filling the first two places the Civil Service A team took the next 5 places mainly due to a “packing” strategy which involved supporting each other so that no one fell off the pace. This strategy saw the CSSA A team win the team event with the B team finishing 2nd.

Katherine played a significant part in the CSSA A team victory finishing 5th overall.

Katherine is pictured below with her team mates - she is on the far left

Well done Katherine on a magnificent achievement.



NESLC BOWLS SECTION

There have been many changes in personnel over the last 15 years in the Bowls Section. We have had lots of good achievements during that time - supplying County players and winning leagues but the 2019 season has been our best one.

The Bowls section won the NESLC Section of the year for the 2nd year running at the NESLC AGM in March. Here is part of our submission.

Number of members: 39

Section achievements. Some terrific achievements in our 70th year:

- * Finished runners-up in the RCSL Outdoor Rinks Championships.
- * Runners-up in the Mens Northumberland County Jubilee Cup (26 entries).
- * A 3rd place finish in the Mens Northumberland County Challenge Cup (28 entries).
- * Our Knight Cup and Clegg Cup teams won their respective divisions.
- * Our other 3 teams all had top half finishes in their respective leagues.

Individual achievements:

- * Stuart Williams was selected for the Mens County B Team and is now a regular fixture in that team.
- * Rory Adamson reached the Semi-finals of the Mens County Champion of Champions. This competition is competed for by the Mens champions at each club in Northumberland.
- * Stuart Williams and George Green gained selection for the Mens County Presidents team for his annual challenge match against the Ladies County Presidents team.

Other achievements we are proud of:

A well attended finals night went extremely well and the season was rounded off with our ever popular tour. We played at Keswick, Workington and Carlisle Subscription and we were very well received by each club having played them all at some stage over the past 4 years. We purchased and placed plant pots around the green. This had the effect of making the green surroundings look so much better and drew praise from many visiting teams.

Moment of the year:

The laughter from our members following my hip replacement, when it was announced that we now had sufficient players to form a bionic rink!

George Green
NESLC
Bowls Section



NESLC Gym's and Sports Hall Activities

Our Gym Manager and officers are currently working behind the scenes to ensure our gyms and facilities are ready for you when the time comes. There will be restrictions in line with Government advice of which we will fully publish as and when we receive more information, but we will do everything to ensure our members Health & Safety are our priority.

We have been receiving enquiries from our members in respect of gym memberships, please be ensured that

all gym members will have their membership extended for the number of months the gyms are closed, you will not lose out.

If you have any enquiries please drop us a line at neslctvpgym@gmail.com.

Missing the Theatre? We are too!!!!

NESLC are continuing to work alongside the Newcastle Theatre Royal regarding Theatre Trips we have booked over the past and coming months.

NESLC will be in touch with any members who are due refunds once we have received the refund from the Theatre.

There are some shows that the Theatre are trying to re-schedule, we will keep everyone updated as we receive this information to advise of alternative dates or refund options if dates are not suitable.

Please continue to bear with us!!!

Section	Contact	Contact Email
Badminton	Jacqueline Ilderton	jacqueline.ilderton@hmrc.gov.uk
Basketball	Mahmud Kibra	mahmud.kibra@hmrc.gov.uk
Bowls	John Golding	johnandjoan14@btinternet.com
Golf	Iwan Owen	Iwan.owen@dwp.gov.uk
Horde Riding	Karen Thirtle	karen.thirtle@hmrc.gov.uk
Ladies Football	Sarah Fairlamb	sarah.fairlamb@hmrc.gov.uk
Netball	Gemma Robson	gemma.robson@dwp.gov.uk
Social Badminton	Mike Turton	miguelvino@hotmail.com
Table Tennis	Pauline Long	pandglong1@gmail.com
Table Top Gaming	Daniel Sweeney	daniel.sweeney@dwp.gov.uk
Tennis	Mike Turton	miguelvino@hotmail.com
Volleyball	Christopher Banks	christopher.banks@hmrc.gov.uk
Wine	Mark Simons	mark.simons@hmrc.gov.uk